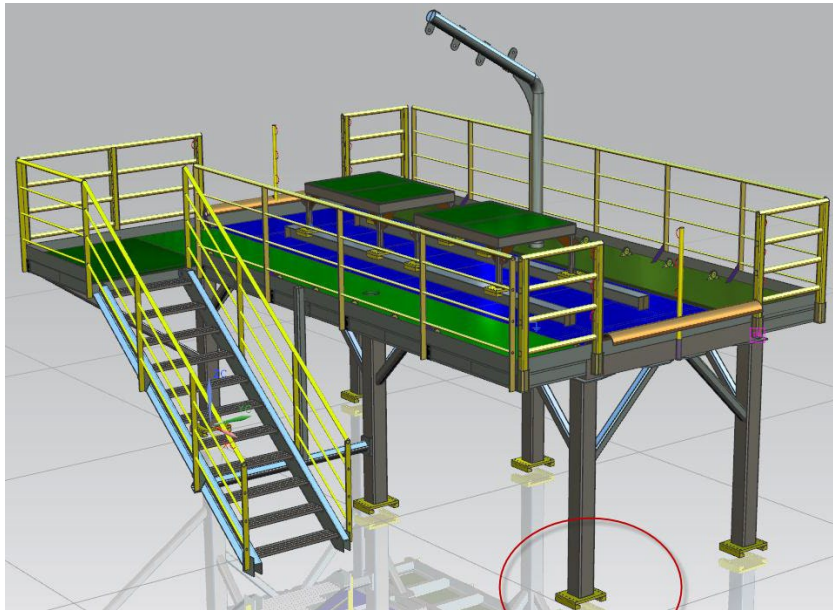


Splicing Table

Purpose built platform for safely and effectively performing umbilical splicing / repair operations on vessel deck; to be used in conjunction with reel and chute.



Splicing Table overview

Specifications

- Max Gross Weight: 13 500 kg
- Weight: 6 000 kg
- Dimensions: 7255 x 4178 x 3574 [mm]
- Manufactured: 2012
- Material: Carbon Steel
- Surface Coating: NORSOK M-501
- Design Code: DNV-OS-C101
DNV-OS-C401
DNV-OS-B101
DNV-2.7.3

Features

- Has two skidding work tables with friction clamps.
- Designed to be fastened onto vessel skidding beams with clamps.
- Has convenient davit certified for 500 kg SWL
- Is delivered with certified 4-part lifting sling

Documentation on request

Drawings for sea fastening
Design calculation report
Material certificates
Welding procedure specification
Lifting certificate

For more information please contact:
Technical Manager, Bernt Gramstad

bernt.gramstad@tiosgroup.com