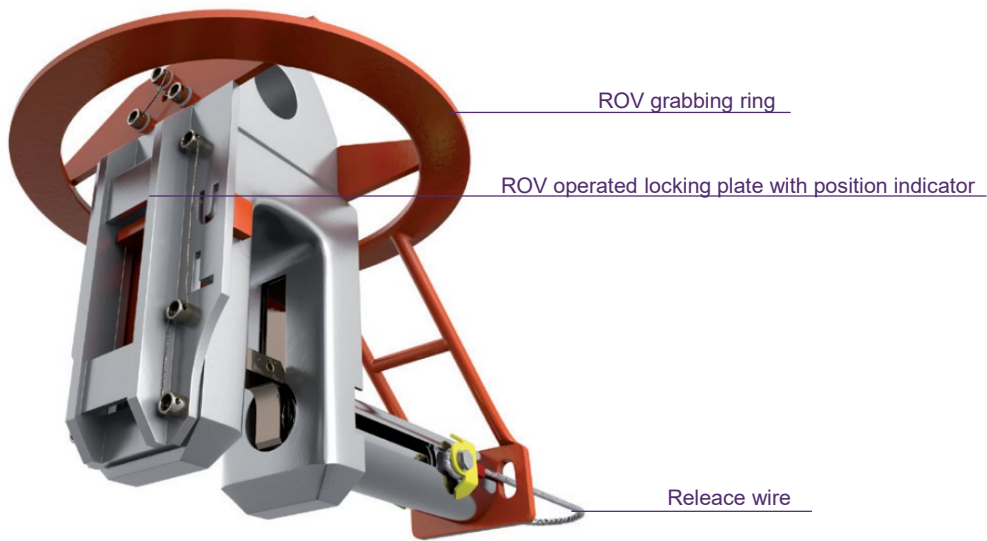


## 150Te Imenco ROV Shackle

*Innovative ROV shackle with a secondary locking mechanism.*



## 150Te Imenco ROV Shackle overview

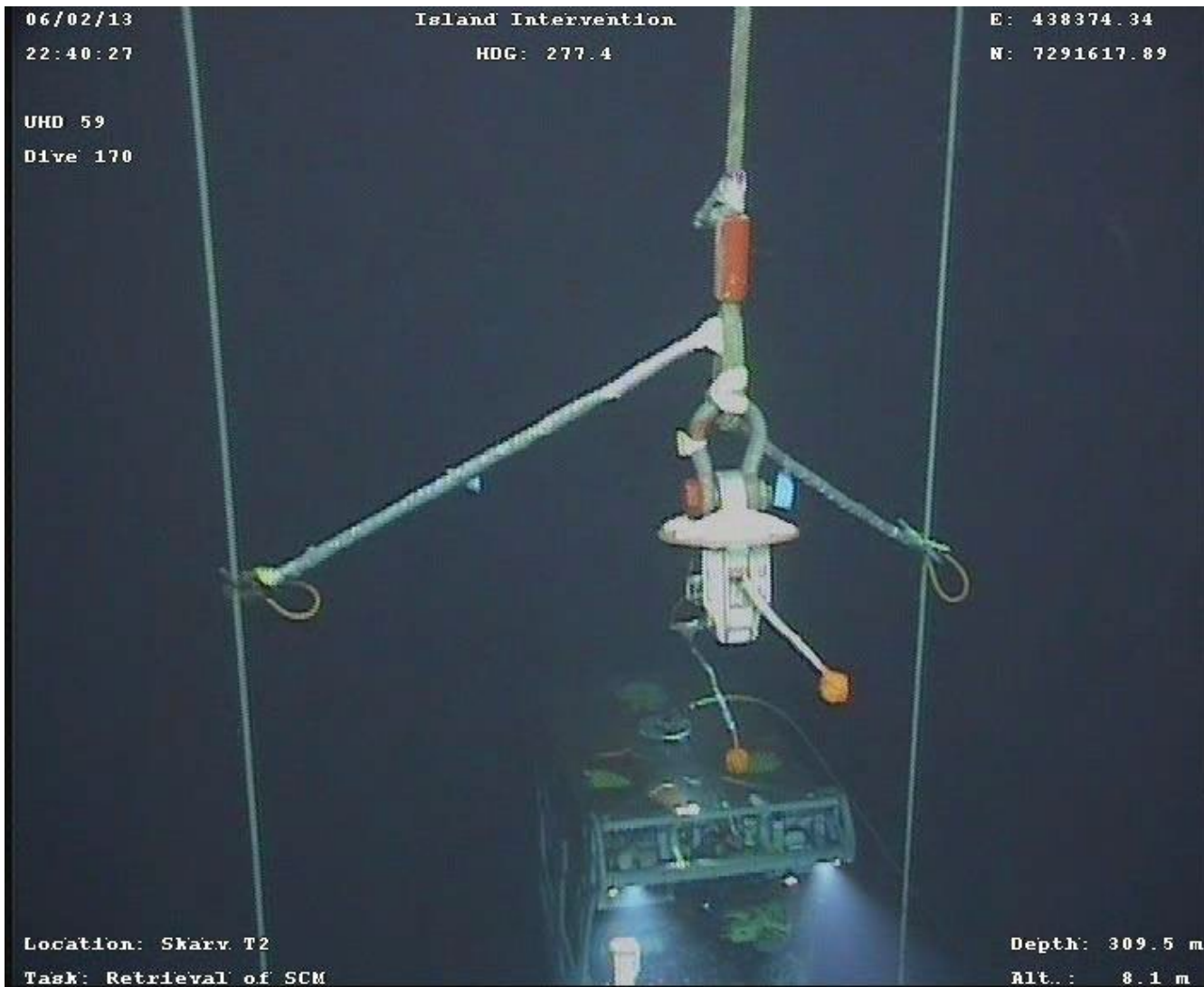
### Specifications

- Capacity: 150Te WLL
- Dry Weight: 404 kg
- Dimensions: 839 x 839 x 755 [mm]
- Manufactured: 2010
- Material: Stainless steel
- Surface coating: NORSOK M-501
- Design code: DNV 2.22  
Maskinforskriften 522

### Features

- Two independent locking mechanisms
- Grabbing ring for ROV
- Same interface dimensions as an equivalent standard D-shackle
- Has spring loaded pin with a “trigger” for simplifying the subsea connection operation





## Documentation on request

Drawings (Imenco)  
 Letter of Conformity (OTIC)  
 Service report( Imenco)  
 Part inspection check lists (Imenco)  
 Material certificates (Imenco)  
 Proof load statement (Imenco)

User manuals / Operation procedures

For more information please contact:  
 Technical Manager, Bernt Gramstad

[bernt.gramstad@tiosgroup.com](mailto:bernt.gramstad@tiosgroup.com)

TIOS AS  
 Lagerveien 23  
 4033 Stavanger  
 +47 51 81 71 00

[www.TIOSgroup.com](http://www.TIOSgroup.com)

© TIOS 2018. All rights reserved.  
 v 1.0.

TIOS Rental Pool | 2